



BENCHMARK BM15 SERIES SERVO VALVE

The Benchmark BM15 series valve is a high performance, two stage valve utilizing a nozzle flapper pilot and a force-feedback design for control. The BM760 has been extensively tested to assure that it is 100% compatible with MTS, Moog models 760, D761, A076; Atchley 215 and 218; Vickers models SM415 and SM420; Schenck Pegasus models 132, 142 and 162. Mating electrical connector is a MS3106F-14S-2S and mounting manifold to conform to ISO 1032-04-04-0-92.

DESCRIPTION

Rated Flow GPM @ 1000 PSID
 Operating Pressure (PSI)
 Recommended Temperature
 Symmetry
 Linearity
 Hysteresis
 Null Shift
 Null Leakage
 Null Bias
 Threshold
 Frequency Response
 Step Response
 Coil Tolerance

DATA

15 +/- 5%
 500 to 3000
 110-120 °F
 < 10%
 < 5%
 < 2.5%
 < 2%
 < .15 GPM
 +/- 2.5%
 < 1%
 80 Hz.
 0-100% 12.5 MS
 +/- 10%

FLUID

Petroleum based fluids
 with a viscosity range
 of 60-450 SUS @ 100 °F

FILTRATION

ISO DIS 4406
 Code 16/13 Max
 Recommend 14/11

ELECTRICAL DATA

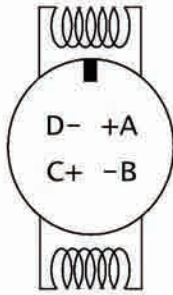
COILS (ohms)	CURRENT (mA/ohms)		
	SINGLE	PARALLEL	SERIES
200	15/200	15/100	7.5/400
80	40/80	40/40	20/160
22	200/22	200/11	100/44

Other values available on request

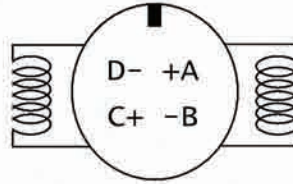


48175 Gratiot
 Chesterfield, Mi. 48051
 E-Mail: sales@ahx1.com
 www.AHX1.com
 800-422-4279

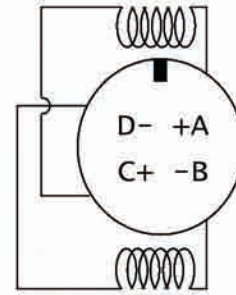
WIRING OPTIONS



PEGASUS WIRING
FLOW OUT C1 WITH
POLARITY SHOWN

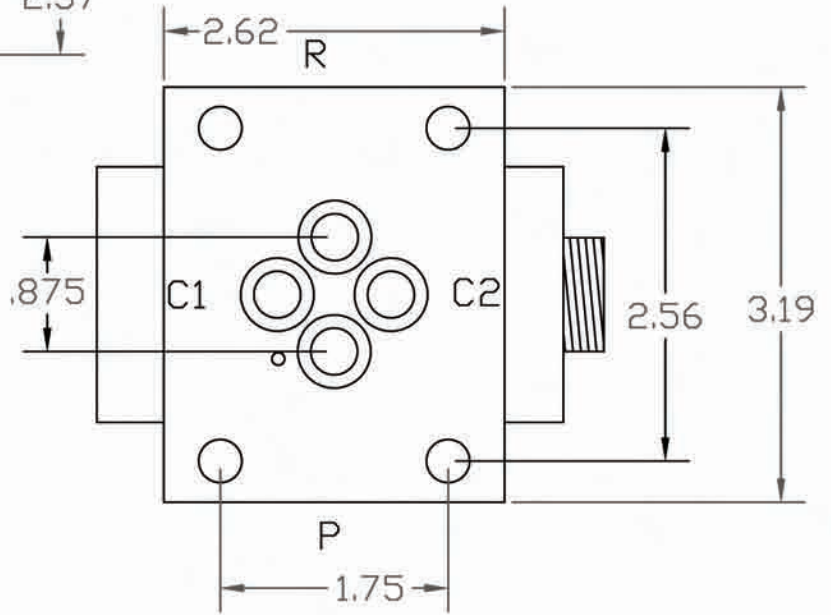
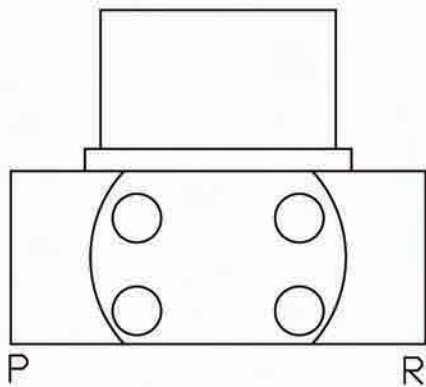
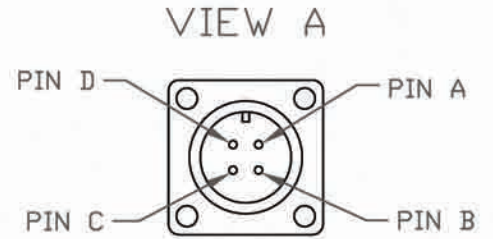
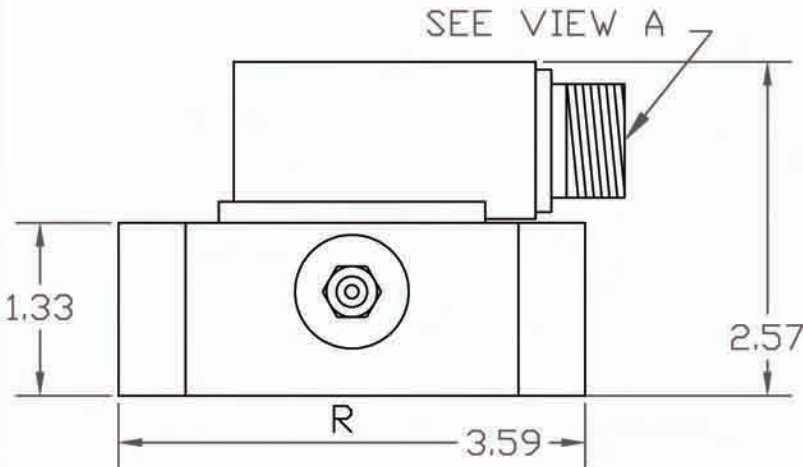


MOOG WIRING
FLOW OUT C2 WITH
POLARITY SHOWN



REXROTH WIRING
FLOW OUT C2 WITH
POLARITY SHOWN

DIMENSIONS



MODEL CODE BREAKDOWN

